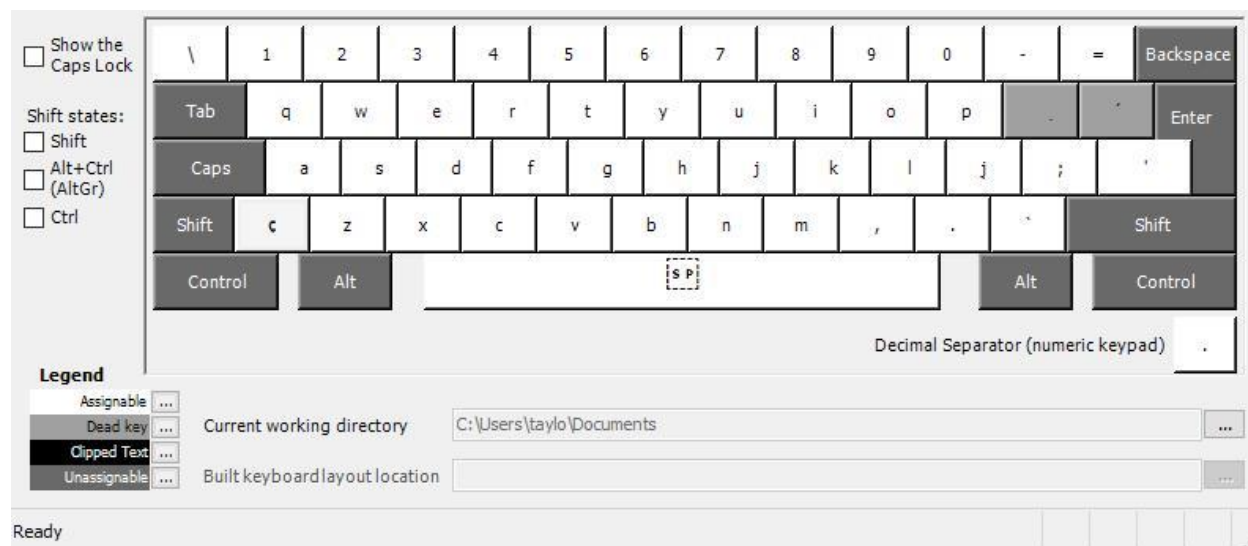


Instructions to install Burushaski Roman (BURROM) alphabet onto your computer

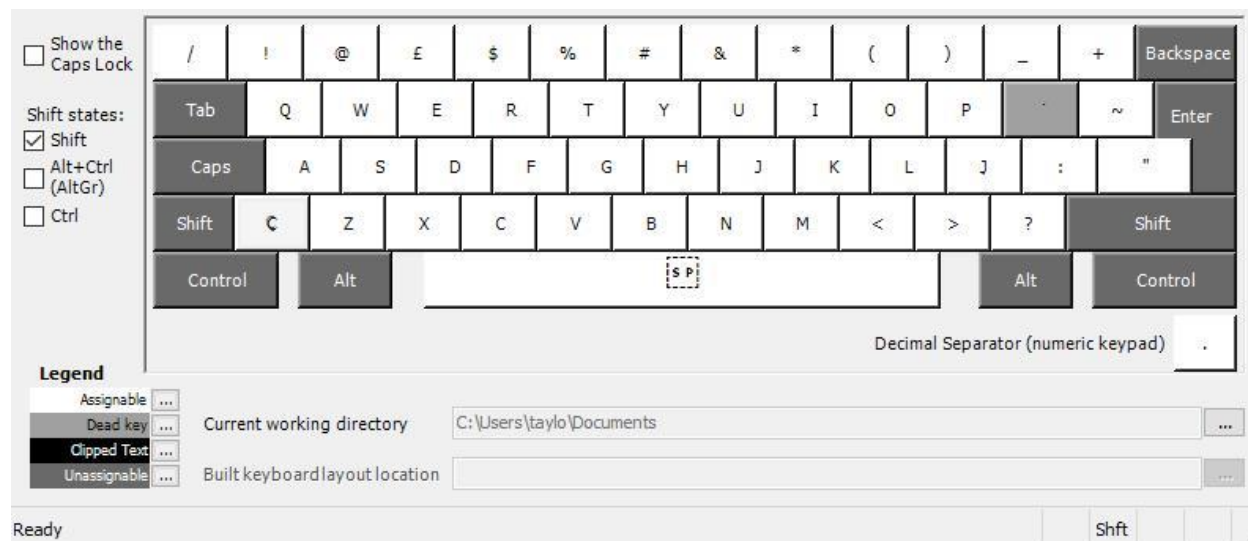
Initial Note: The Burushaski keyboards currently work for Microsoft Windows users only. Mac users are recommended to install Windows in a virtual box and follow the procedure from there, or wait until we might have a solution for them.

BURROM 1, BURROM 2 and **BURROM 3** are three different keyboard layouts for Burushaski. **BURROM 1** has an extra key for the letter ǰ whereas **BURROM 2** has the [] brackets. **BURROM 3** is particularly recommended for those using a US keyboard and has extra symbols available with the use of the ALT-GR key which did not function with the other two keyboards. The following keyboard layouts for Burushaski should help you decide which version to install:

BURROM-1



BURROM-1 SHIFT (CAPS LOCK)



BURROM-2

BURROM-2 SHIFT (CAPS LOCK)

On the next page is the more recently developed BURROM-3 keyboard.

BURROM-3

☐ Show the Caps Lock

Shift states:
☐ Shift
☐ Alt+Ctrl (AltGr)
☐ Ctrl

/	1	2	3	4	5	6	7	8	9	0	-	=	Backspace
Tab	q	w	e	r	t	y	u	i	o	p	.	'	Enter
Caps	a	s	d	f	g	h	j	k	l	;	'	@	
Shift		z	x	c	v	b	n	m	ç	,	.		Shift
Control	Alt	SP										Alt	Control

Decimal Separator (numeric keypad) .

Legend

Assignable	...
Dead key	...
Clipped Text	...
Unassignable	...

Current working directory C:\Users\taylo\Documents

Built keyboard layout location

Ready

BURROM-3 SHIFT

☐ Show the Caps Lock

Shift states:
☒ Shift
☐ Alt+Ctrl (AltGr)
☐ Ctrl

\	!	"	£	\$	%	'	&	*	()	_	+	Backspace
Tab	Q	W	E	R	T	Y	U	I	O	P	.	?	Enter
Caps	A	S	D	F	G	H	J	K	L	:	[]	
Shift		Z	X	C	V	B	N	M	Ç	<	>		Shift
Control	Alt	SP										Alt	Control

Decimal Separator (numeric keypad) .

Legend

Assignable	...
Dead key	...
Clipped Text	...
Unassignable	...

Current working directory C:\Users\taylo\Documents

Built keyboard layout location

Ready

BURROM-3 ALT-GR

☐ Show the Caps Lock

Shift states:
☐ Shift
☒ Alt+Ctrl (AltGr)
☐ Ctrl

		`	~	#	^	€	{	}					Backspace
Tab													Enter
Caps													
Shift													Shift
Control	Alt											Alt	Control

Decimal Separator (numeric keypad)

Legend

Assignable	...
Dead key	...
Clipped Text	...
Unassignable	...

Current working directory C:\Users\taylo\Documents

Built keyboard layout location

Ready

Download the complete BURROM folder for the version you choose to install and this instruction. This will enable you to install **BURROM 1/2/3** according to your choice onto computer.

Capacity of the keyboards

The keyboard files can type the following letters with diacritics – á é í ó ú ç ð ĵ ñ ş ț ȳ ȳ ç ĝ ñ ÿ ž, and the capital letters accordingly.

How to use the BURROM keyboards

Typing acute accent on top: press the button left side of “enter”, then the lower or upper case letter.

For example s to get ś.

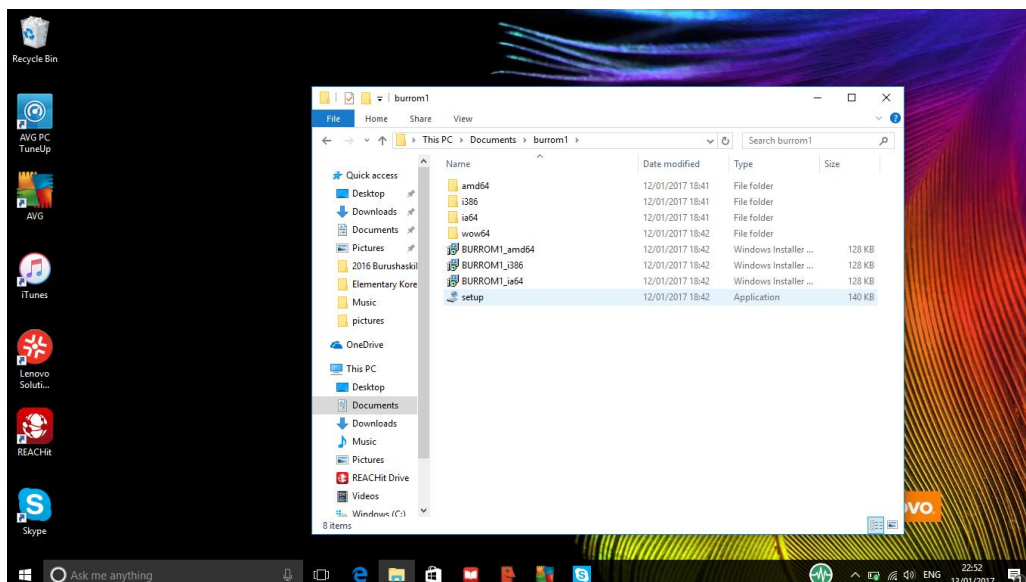
Typing dot underneath: press the lower case button beside “p” and then the lower or upper case letter. For example n to get ñ.

Typing dot on top: press the upper case button beside “p” and then the lower or upper case letter. for example y to get ŷ.

Two characters – the ç and the ĵ and Ĵ (or [and] in BURROM 2 – are generated differently by simply pressing a separate button. The rest of the letters can be typed through combining a ‘dead key’ for the diacritic (first) and the base letter (afterwards).

Installation Instructions

- 1) Click on Setup (Application) in the BURROM folder.



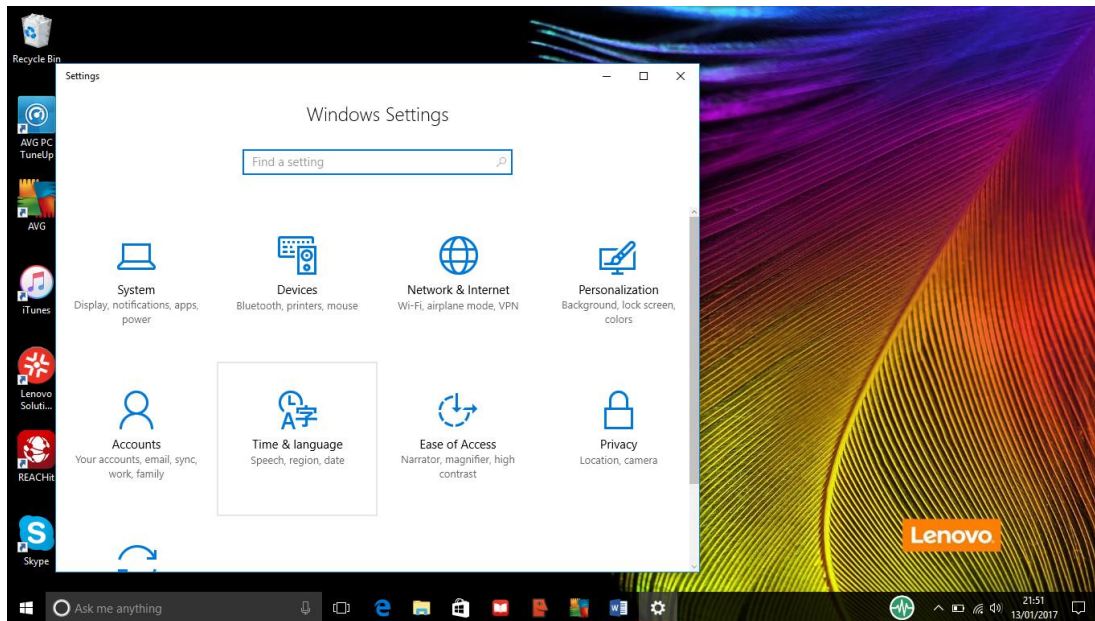
- 2) Install keyboard file using the installation wizard.
- 3) Restart your computer at this point.
- 4) Follow further instruction according to your Windows version.

Windows 10 Instructions

Go to START.

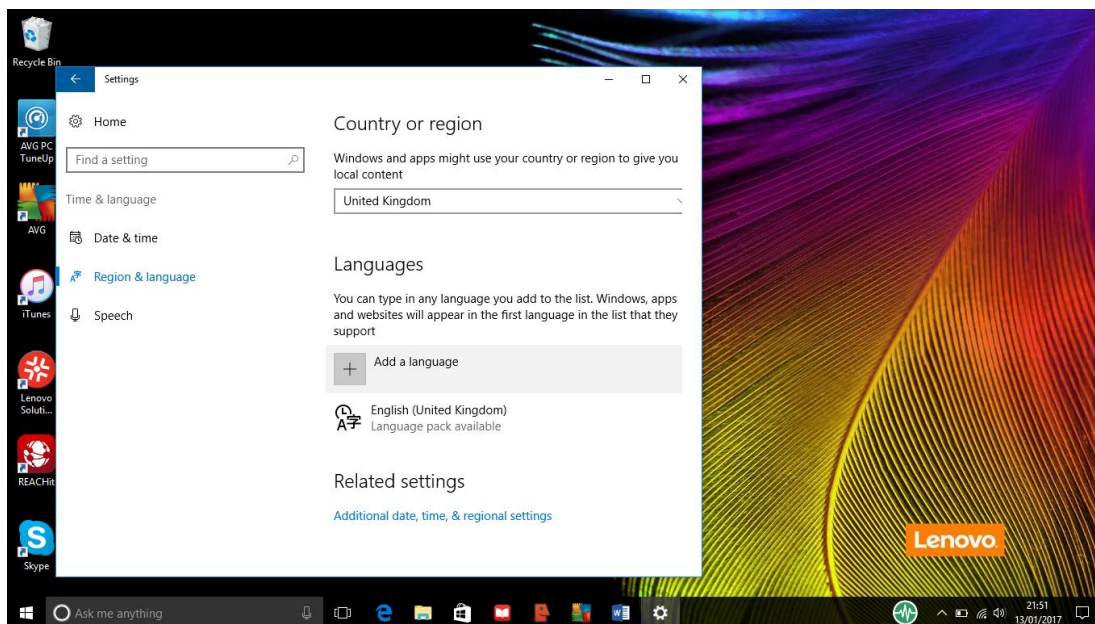
Go to Settings.

Go to Time & Language.

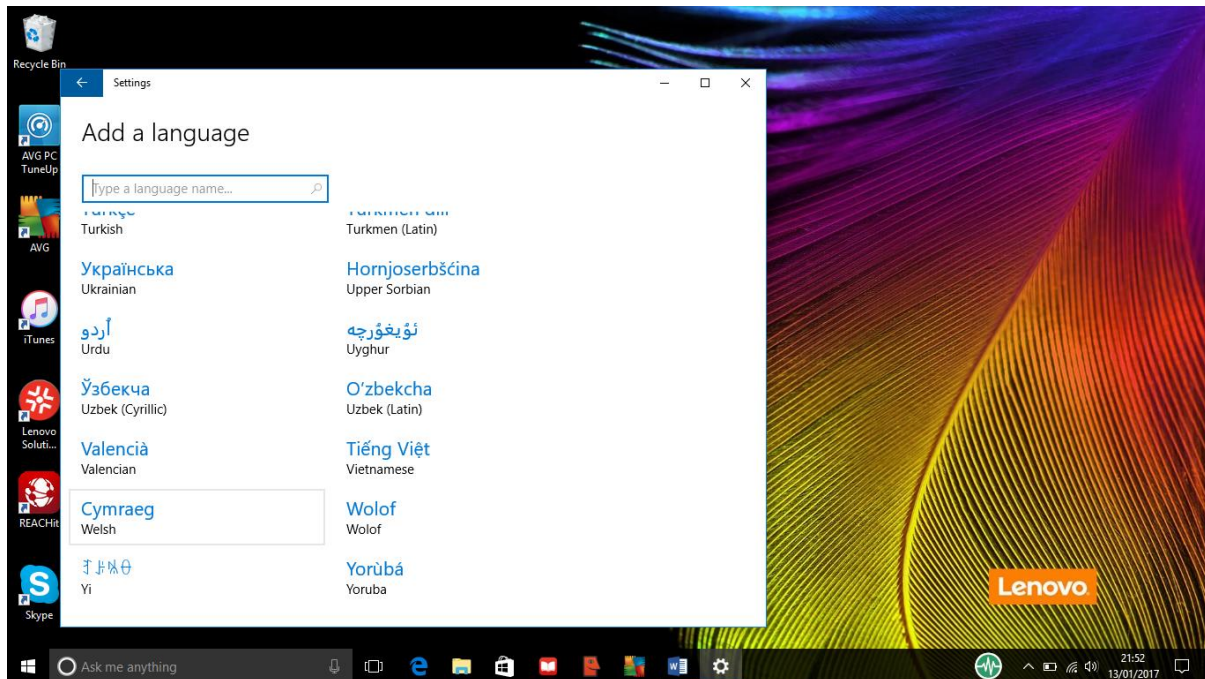


Go to Region & language.

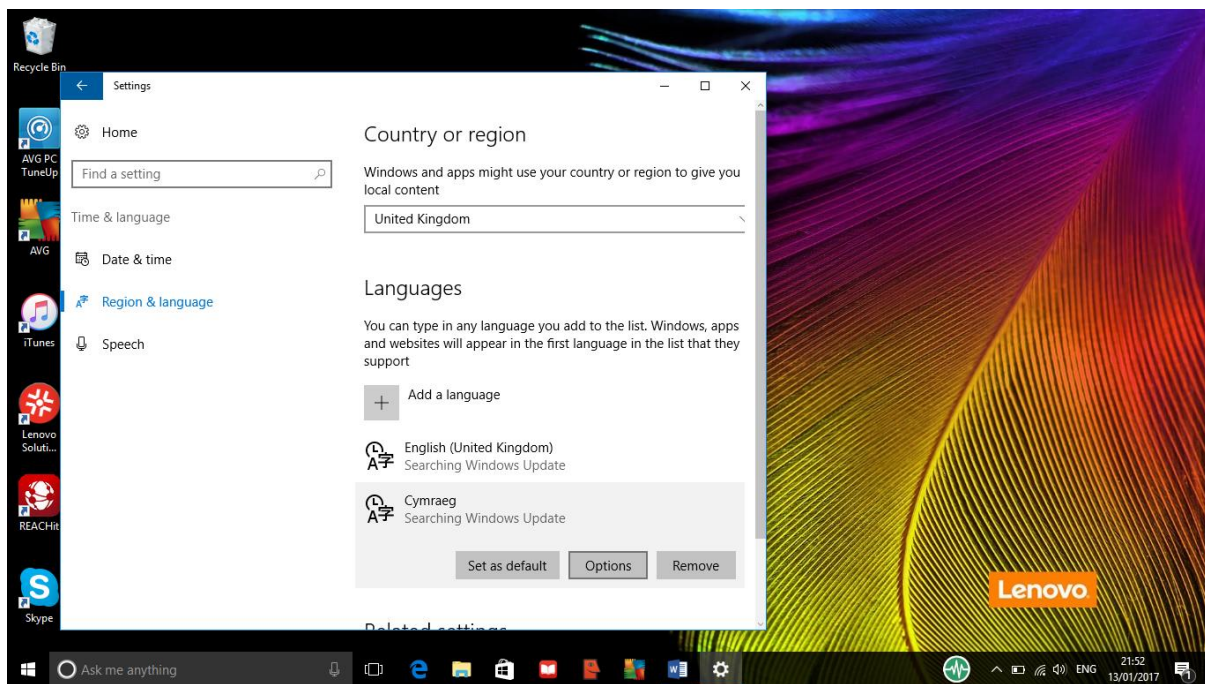
Add a language.



Add Welsh / Cymraeg.

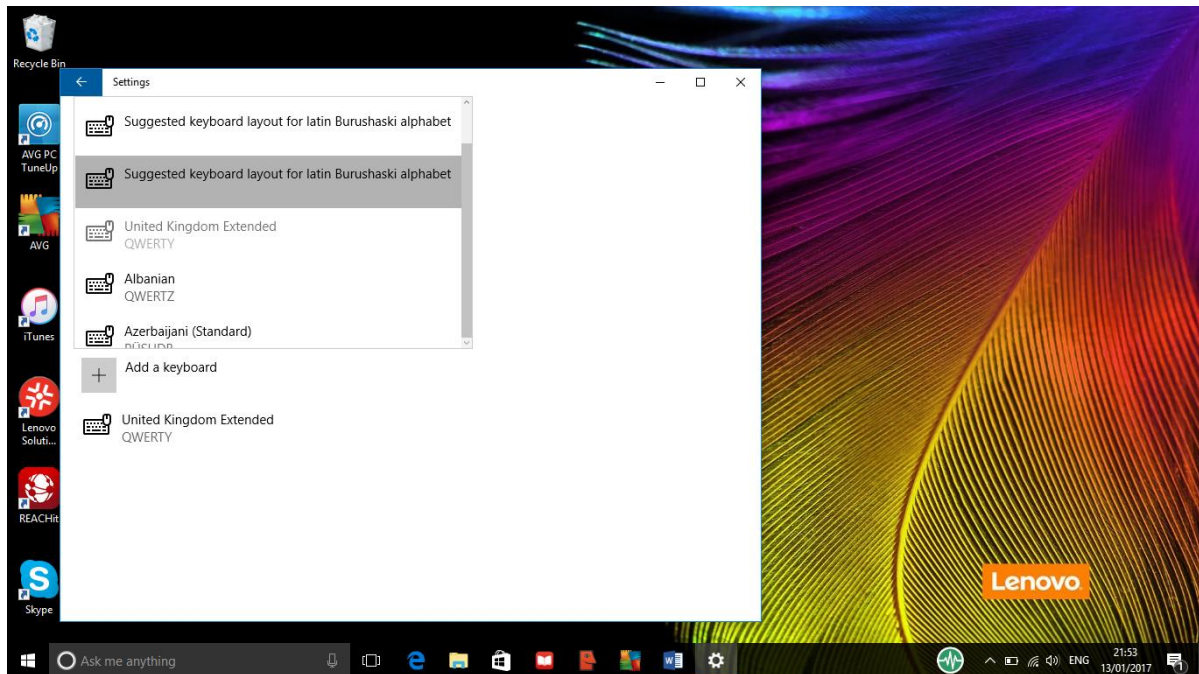


Click on Cymraeg.



Choose Options.

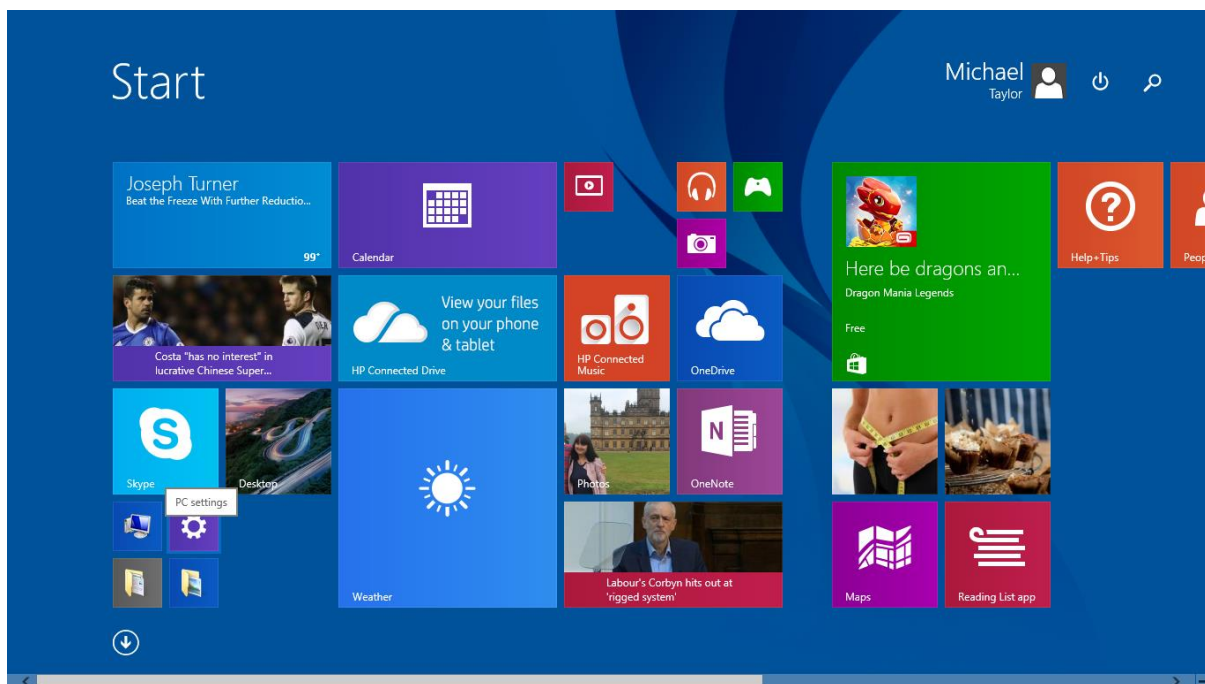
Choose 'Suggested keyboard layout for latin Burushaski alphabet' for BURROM-1/2 and 'Burushaski Roman Keyboard' for BURROM-3



Windows 8 Instructions

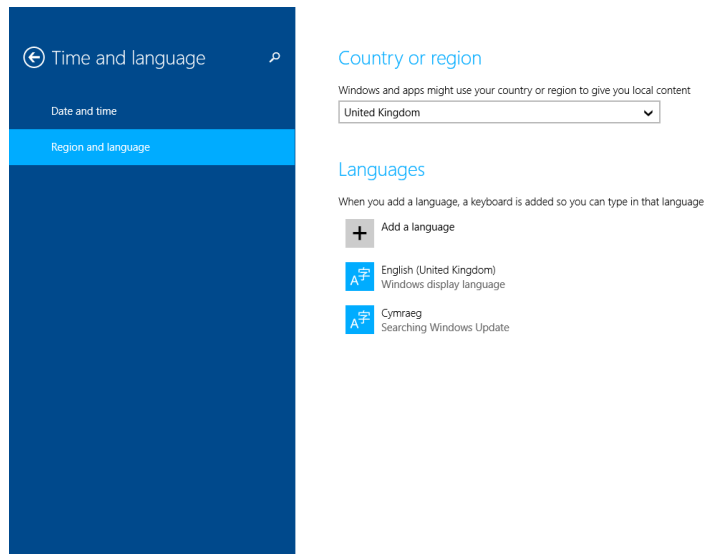
Go to START.

Go to Settings.



Go to Time and language.

Go to Region and language.

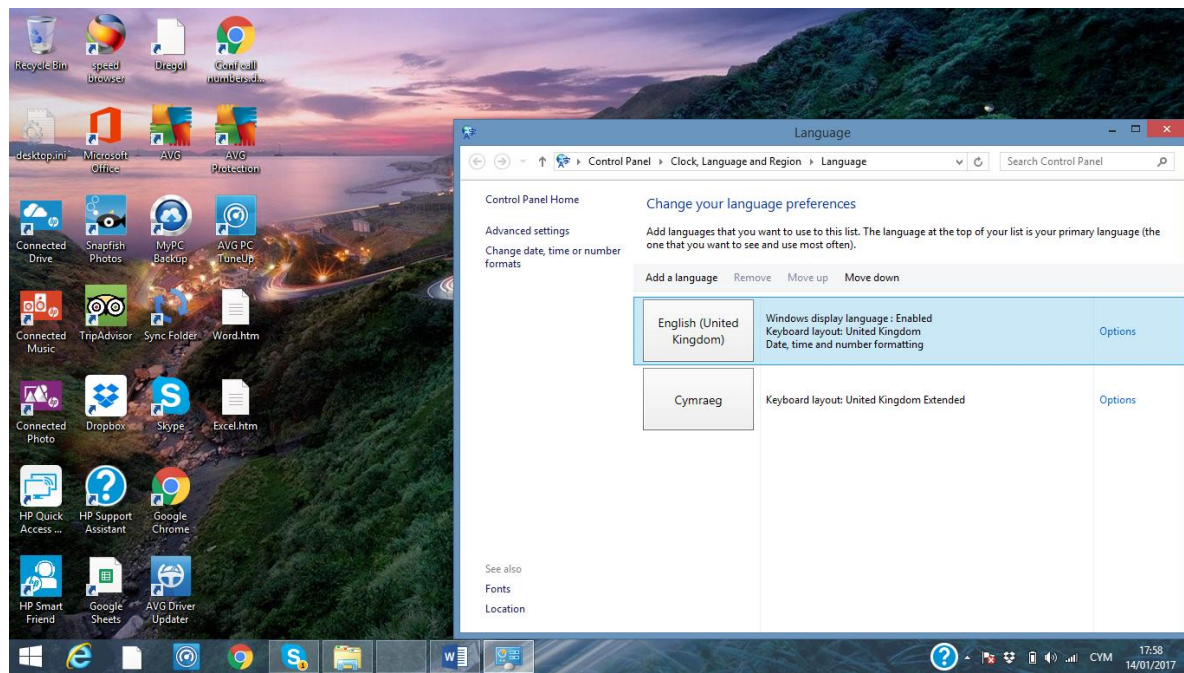


Add a language.

Choose Welsh / Cymraeg.

Go to language bar.

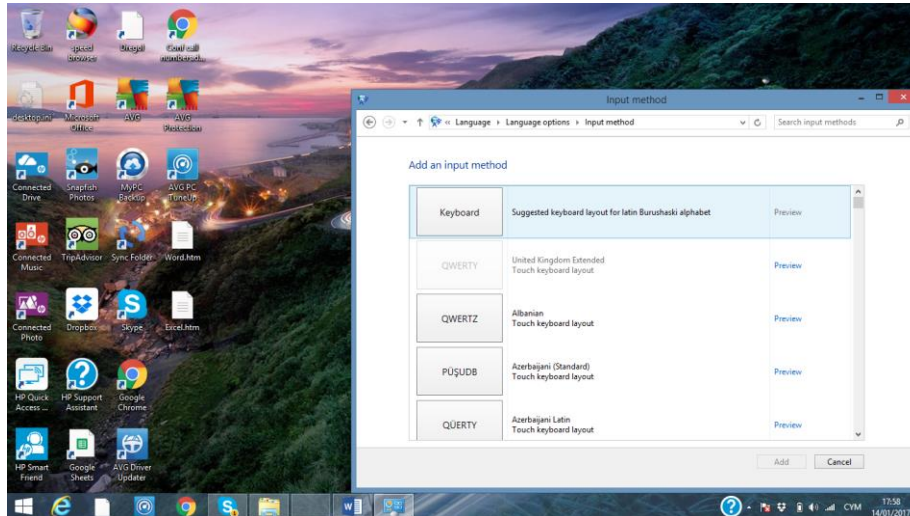
Click on language preferences.



Choose Cymraeg Options.

Add an input method.

Choose 'Suggested keyboard layout for latin Burushaski alphabet' for BURROM-1/2 and 'Burushaski Roman Keyboard' for BURROM-3

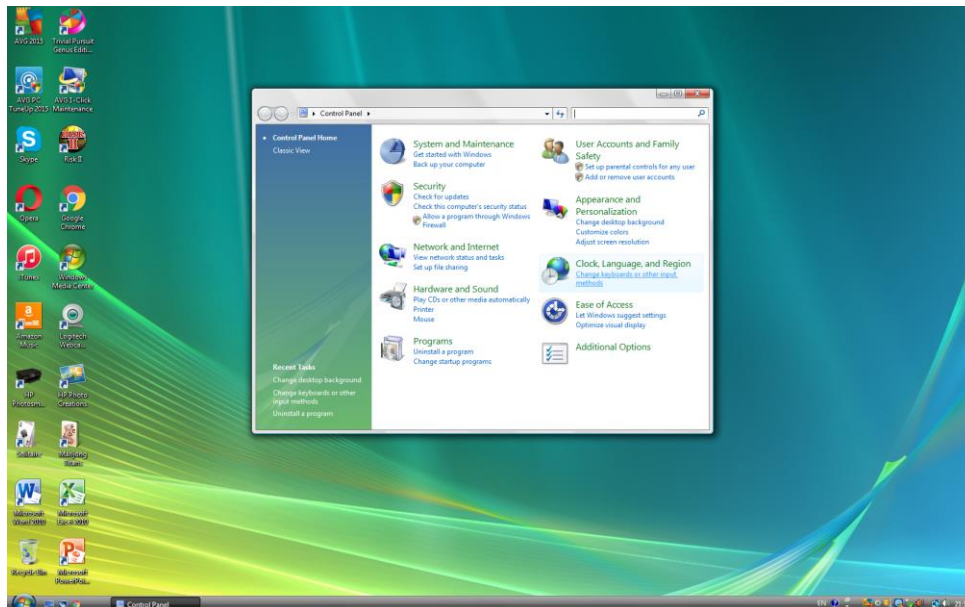


Windows Vista Instructions

Go to START.

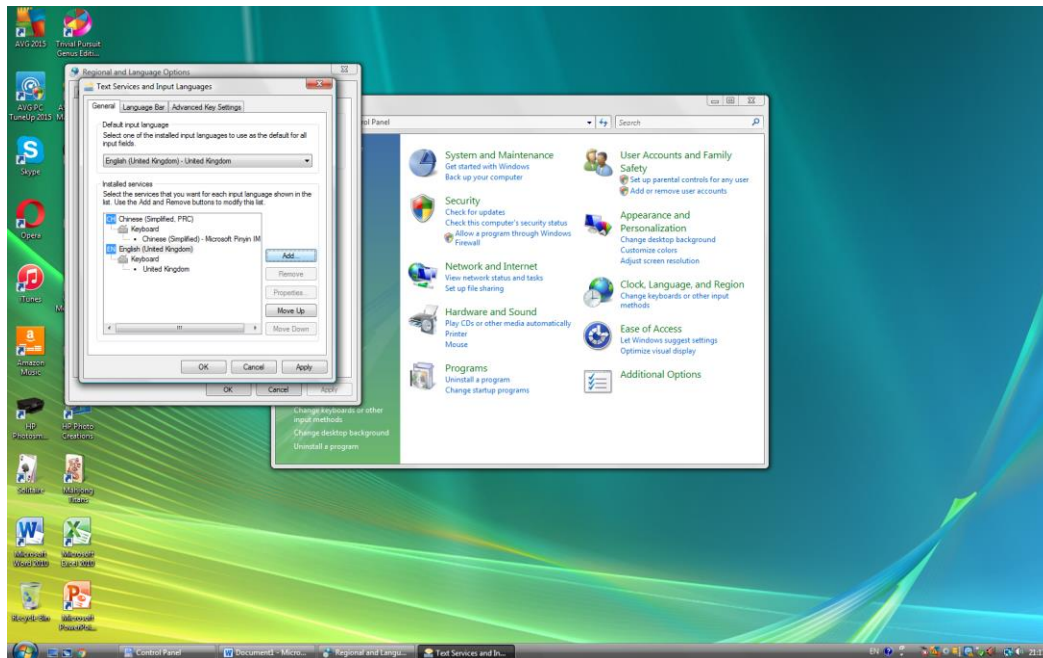
Go to Control Panel.

Go to Change keyboards or other input methods.



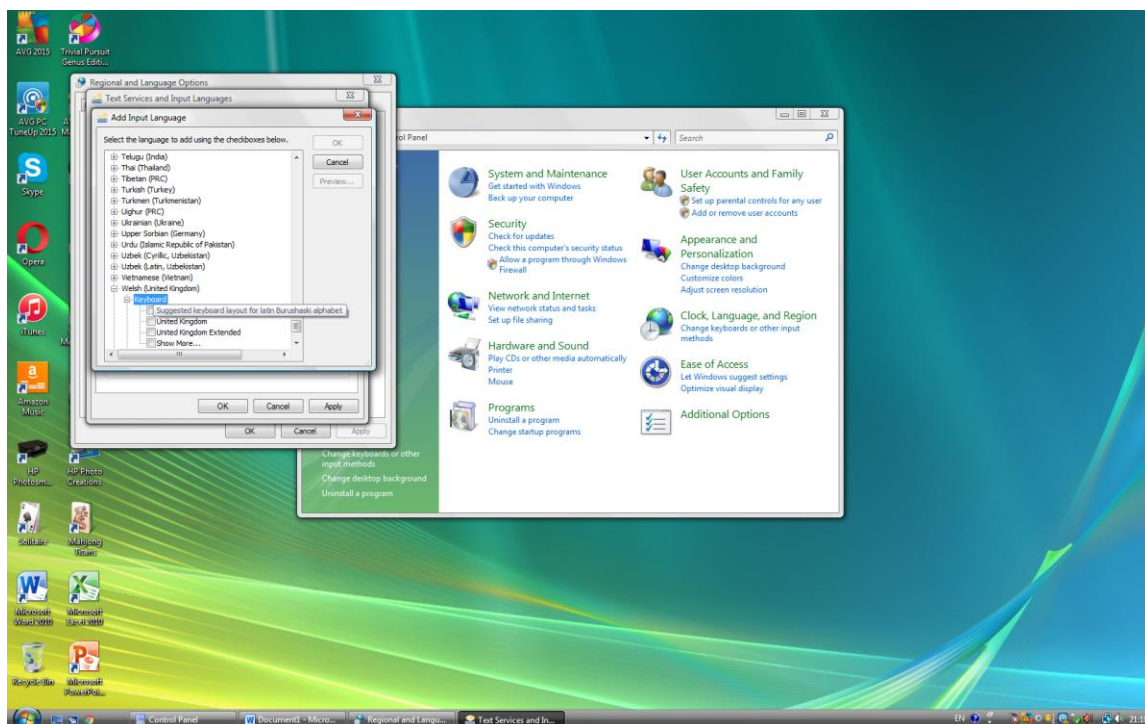
Go to Change keyboards.

Go to Add... .

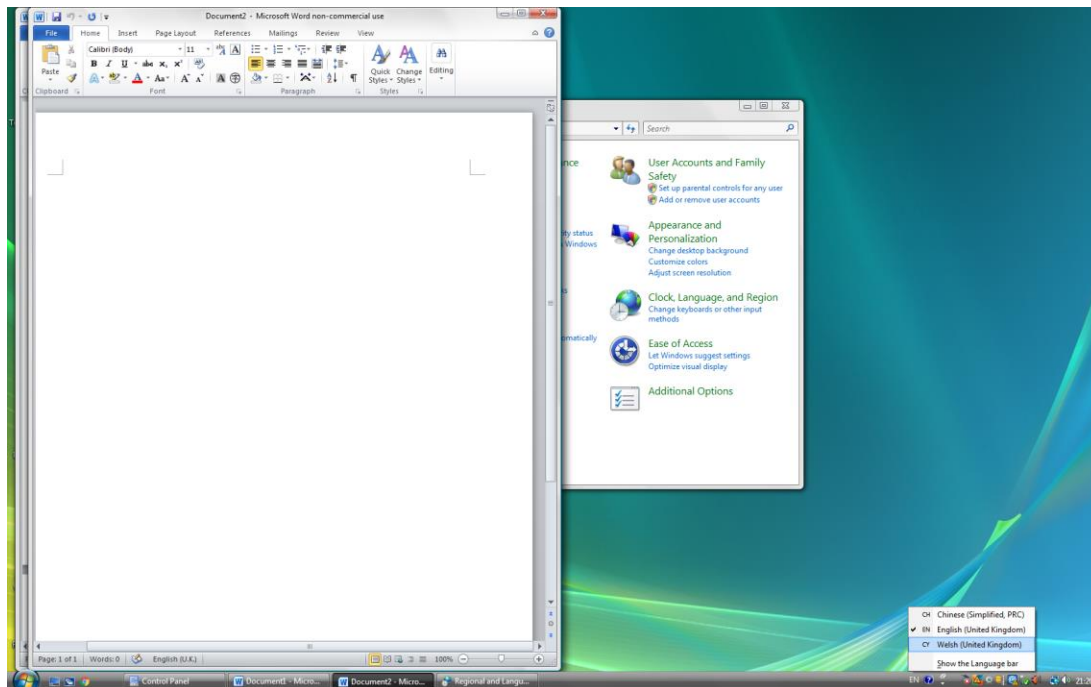


Choose Welsh.

Choose 'Suggested keyboard layout for latin Burushaski alphabet' for BURROM-1/2 and 'Burushaski Roman Keyboard' for BURROM-3



Click OK.



Do you have any problems? Please direct any queries, questions or comments to

david@burushaski-ls.com .

Alternatively you can contact info@burushaski-ls.com .